

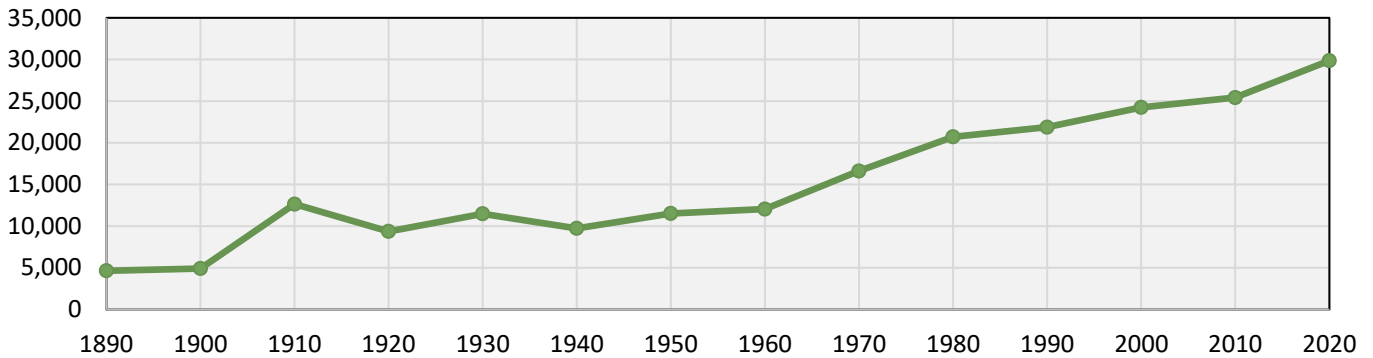


# MEADE COUNTY PROFILE

The Meade County Profile is used to assist in understanding past, existing, and potential future conditions and trends in the county. The information presented is just one of many tools used to help guide future planning efforts for the county. The Meade County Profile was created from several sources, including U.S. Census Bureau's Decennial Census, American Community Survey 5-year Estimates, and Minor Civil Division – City and Town Population Totals, EMSI (labor market analytics and economic data), Rushmore Region Alliance, Sturgis Economic Development Corp., Elevate Rapid City, Meade County Parcels, Meade County Highway Department, and Meade County Permit Reports.

## DEMOGRAPHICS

### MEADE COUNTY POPULATION 1890-2020



#### TOTAL POPULATION (2020)

- 29,852 - Meade County \*17%**
- 10,243 - Butte County \*1%**
- 25,768 - Lawrence County \*7%**
- 109,222 - Pennington County \*8%**
- 886,667 - South Dakota \*9%**

\*percent increase from 2010

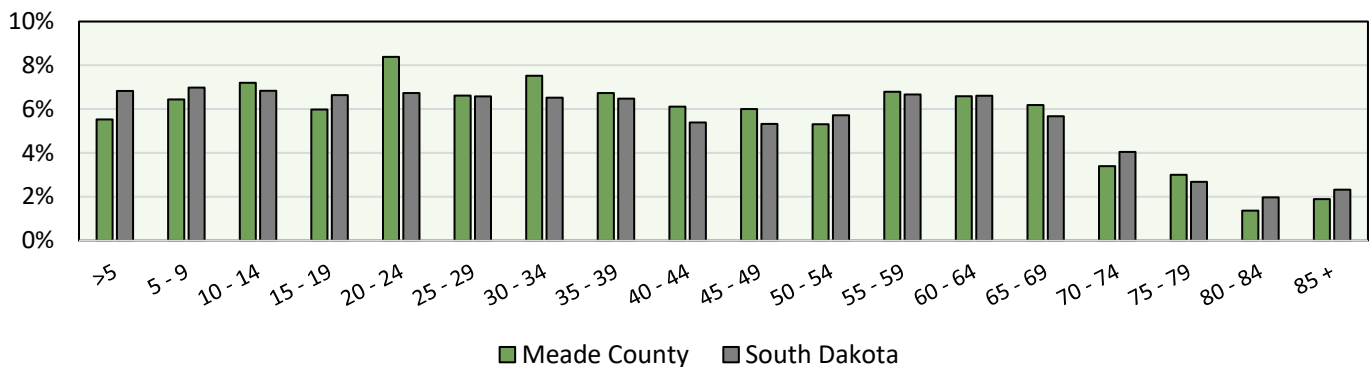
#### POPULATION (2020)

Inside and Outside City Limits

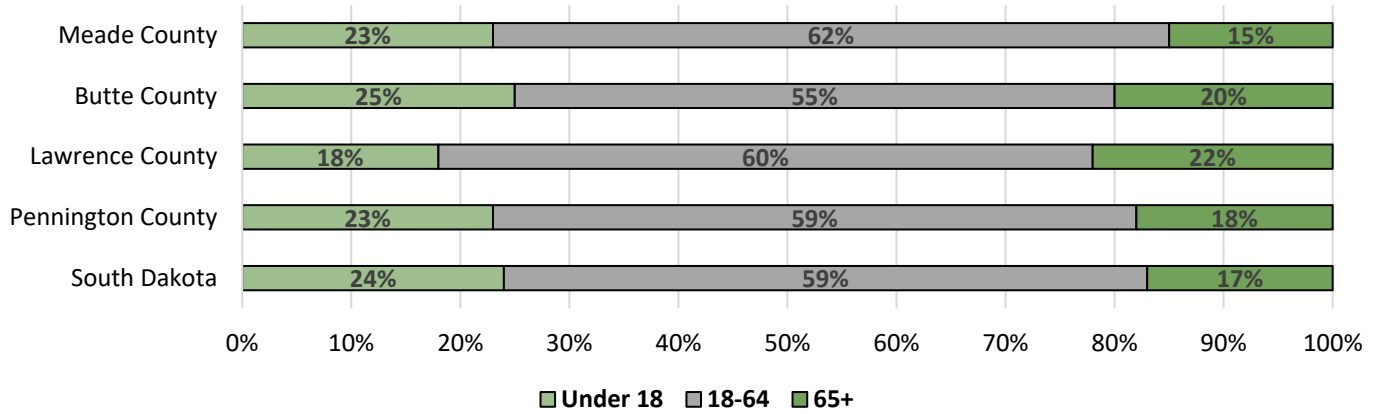
- 14,163 - Meade County Unincorporated \*12,334**
- 11,746 - Box Elder \*7,800 (4,359 in Meade County \*2,706)**
- 367 - Faith \*421**
- 971 - Piedmont \*222**
- 7,020 - Sturgis \*6,627**
- 2,972 - Summerset \*3,124**

\*2010

#### AGE RANGES (2020)



### AGE COHORTS (2020)



### MEDIAN AGE (2020)

**36.2 - Meade County** \*35.9  
**40.5 - Butte County** \*41.1  
**42.3 - Lawrence County** \*39.4  
**38.8 - Pennington County** \*36.7  
**37.2 - South Dakota** \*37.2

\*2010

### VETERANS (2020)

% of Total Population

**13.6% - Meade County** \*18.7%  
**11.2% - Butte County** \*15.4%  
**10.5% - Lawrence County** \*13.4%  
**12.2% - Pennington County** \*16%  
**8.5% - South Dakota** \*12.1%

\*2010

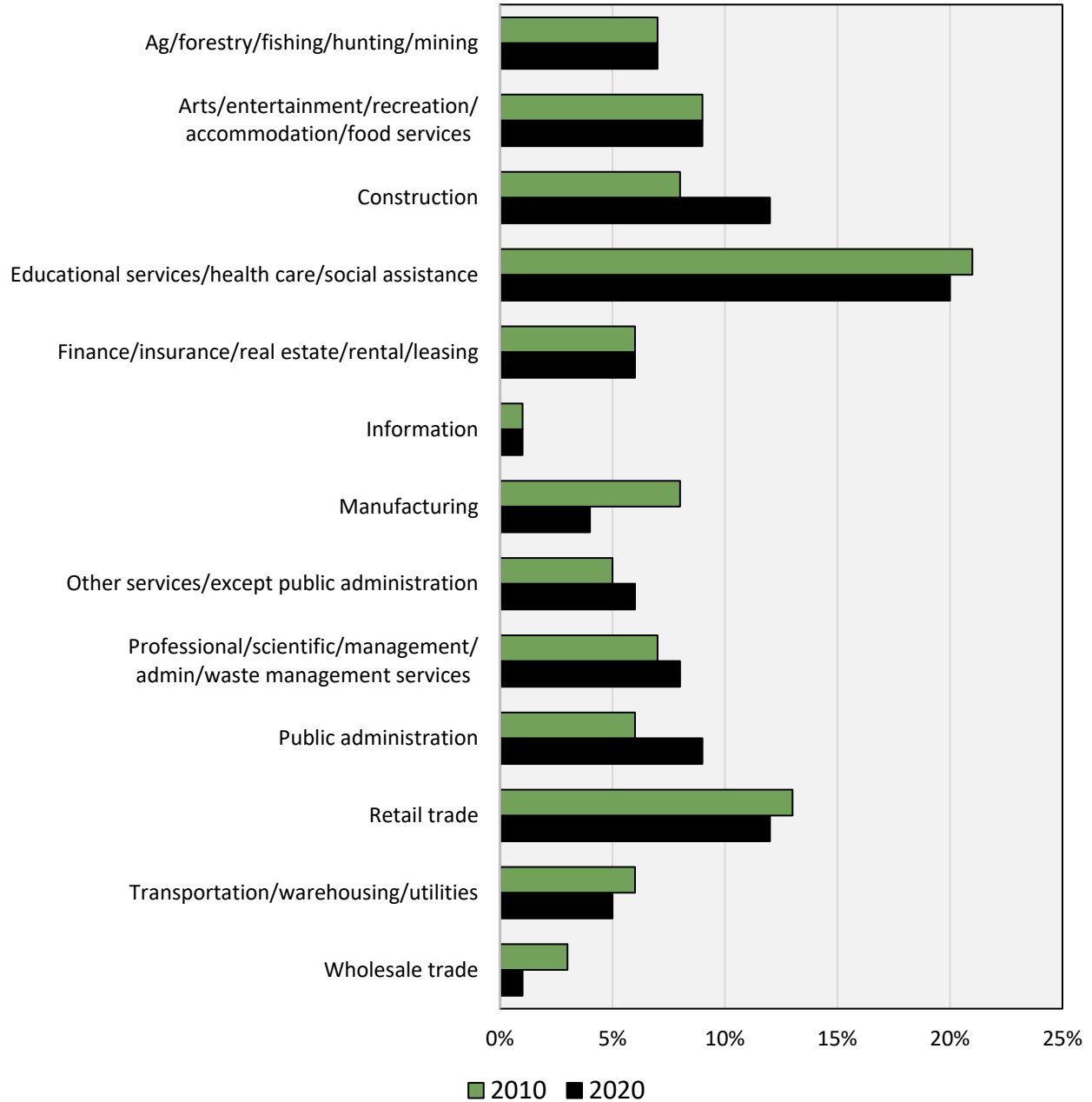
## INDUSTRY & ECONOMY

### PERCENT OF WORKERS PER INDUSTRY (2020) (civilian 16+)

Industry	Meade	Butte	Lawrence	Pennington	South Dakota
Ag/forestry/fishing & hunting/mining	7%	16%	5%	2%	6%
Arts/entertainment/recreation/accommodation & food services	9%	10%	20%	12%	9%
Construction	12%	7%	8%	8%	7%
Educational services/health care/social assistance	20%	19%	22%	24%	24%
Finance/insurance/real estate/rental/leasing	6%	9%	4%	7%	7%
Information	1%	1%	1%	2%	2%
Manufacturing	4%	9%	5%	6%	10%
Other services, except public administration	6%	5%	7%	5%	5%
Professional/scientific/management/admin/waste management	8%	5%	7%	8%	7%
Public administration	9%	3%	4%	5%	5%
Retail trade	12%	9%	12%	13%	11%
Transportation/warehousing/utilities	5%	4%	4%	5%	4%
Wholesale trade	1%	3%	1%	3%	3%

## MEADE COUNTY PERCENT OF WORKERS PER INDUSTRY

(civilian 16+)



### MEADE COUNTY TOP EMPLOYERS

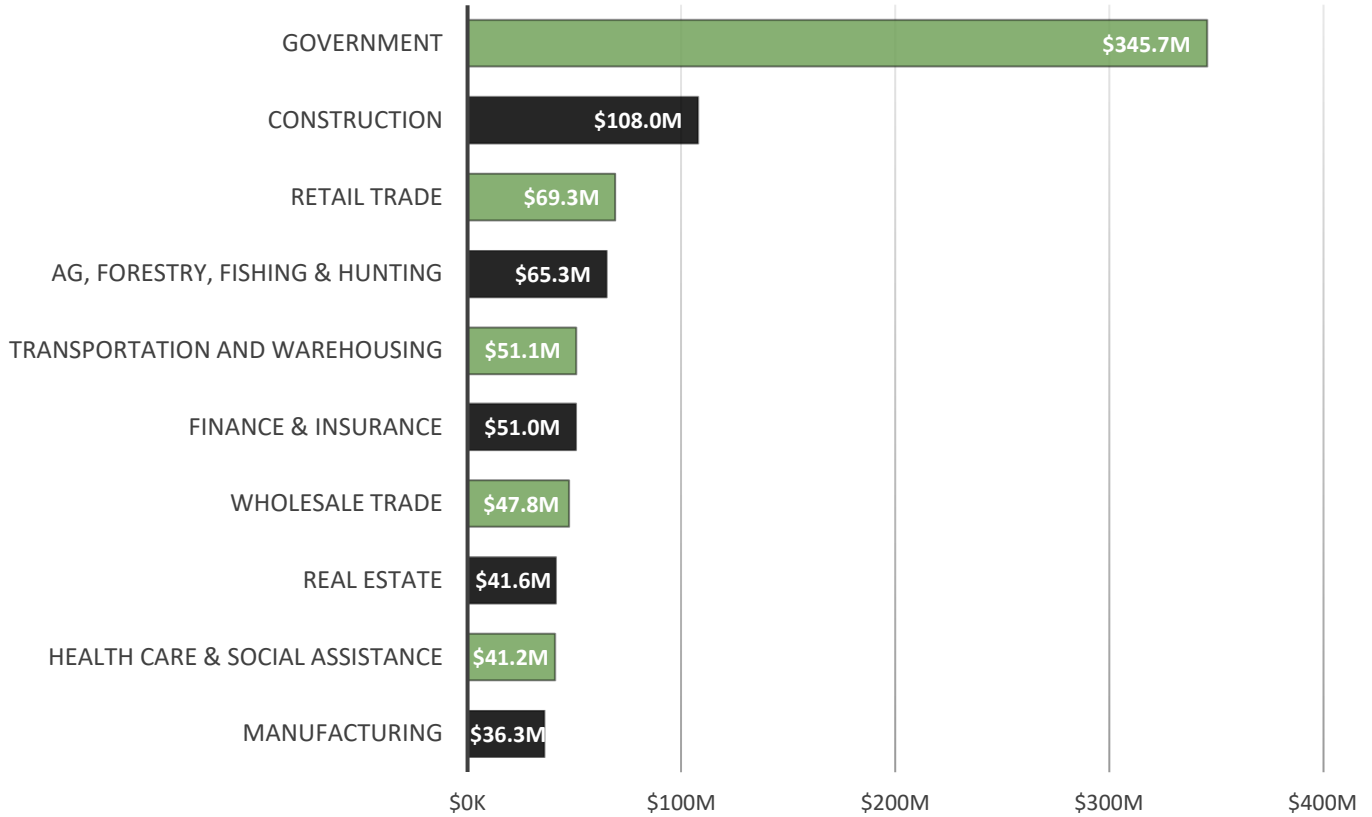
- Fort Meade VA Hospital
- Ellsworth AFB
- Black Hills Special Services Coop
- Meade School District
- Monument Health

### GROSS REGIONAL PRODUCT (GRP) (2021)

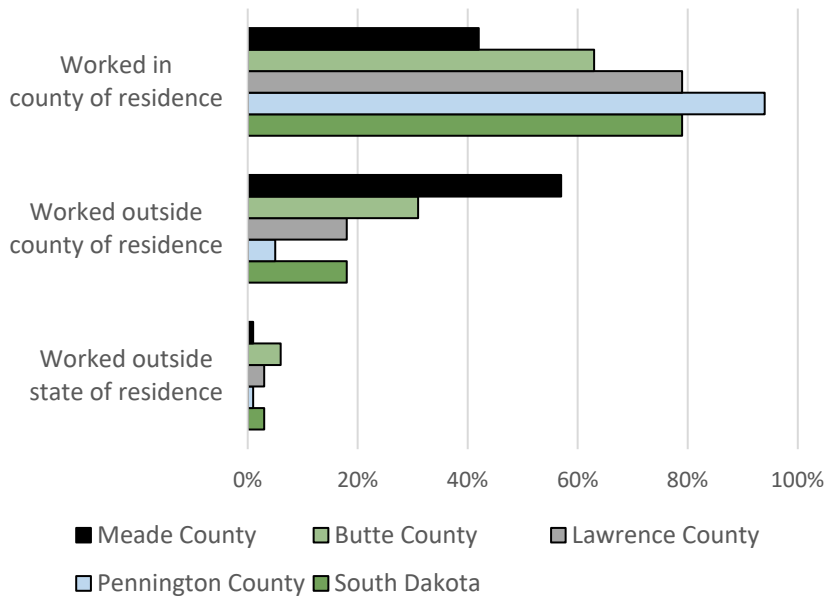
- \$1.20B - Meade County
- \$387.1M - Butte County
- \$1.52B - Lawrence County
- \$7.98B - Pennington County
- \$61.14B - South Dakota

## MEADE COUNTY TOP 10 INDUSTRIES BY GROSS REGIONAL PRODUCT

In Millions (2021)



### PLACE OF WORK (2020)



### MEADE COUNTY - 2010 to 2020

3% decrease of population working in county of residence.  
 5% increase of population working outside county of residence.  
 2% decrease of population working outside state of residence.

### PERCENT EMPLOYED

Civilian Population (2020)

**65.5% - Meade County** \*61.6%  
**62.8% - Butte County** \*61.7%  
**61.8% - Lawrence County** \*62.3%  
**62.0% - Pennington County** \*64.7%  
**65.2% - South Dakota** \*65.8%

\*2010

### PERCENT EMPLOYED

Armed Forces (2020)

**4.7% - Meade County** \*6.2%  
**0% - Butte County** \*0%  
**0.2% - Lawrence County** \*0.1%  
**0.9% - Pennington County** \*1.8%  
**0.4% - South Dakota** \*0.5%

\*2010

### MEAN TRAVEL TIME TO WORK (2020)

- 20 min - Meade County \*20 min
- 17 min - Butte County \*21 min
- 18 min - Lawrence County \*18 min
- 19 min - Pennington County \*18 min
- 17 min - South Dakota \*17 min

\*2010

### WORKED FROM HOME (2020)

- 8% - Meade County \*6%
- 11% - Butte County \*8%
- 5% - Lawrence County \*6%
- 6% - Pennington County \*4%
- 7% - South Dakota \*6%

\*2010

## EDUCATION

### HIGH SCHOOL GRAD OR HIGHER

Age 25+ (2020)

- 95% - Meade County \*93%
- 93% - Butte County \*88%
- 94% - Lawrence County \*93%
- 94% - Pennington County \*91%
- 92% - South Dakota \*89%

\*2010

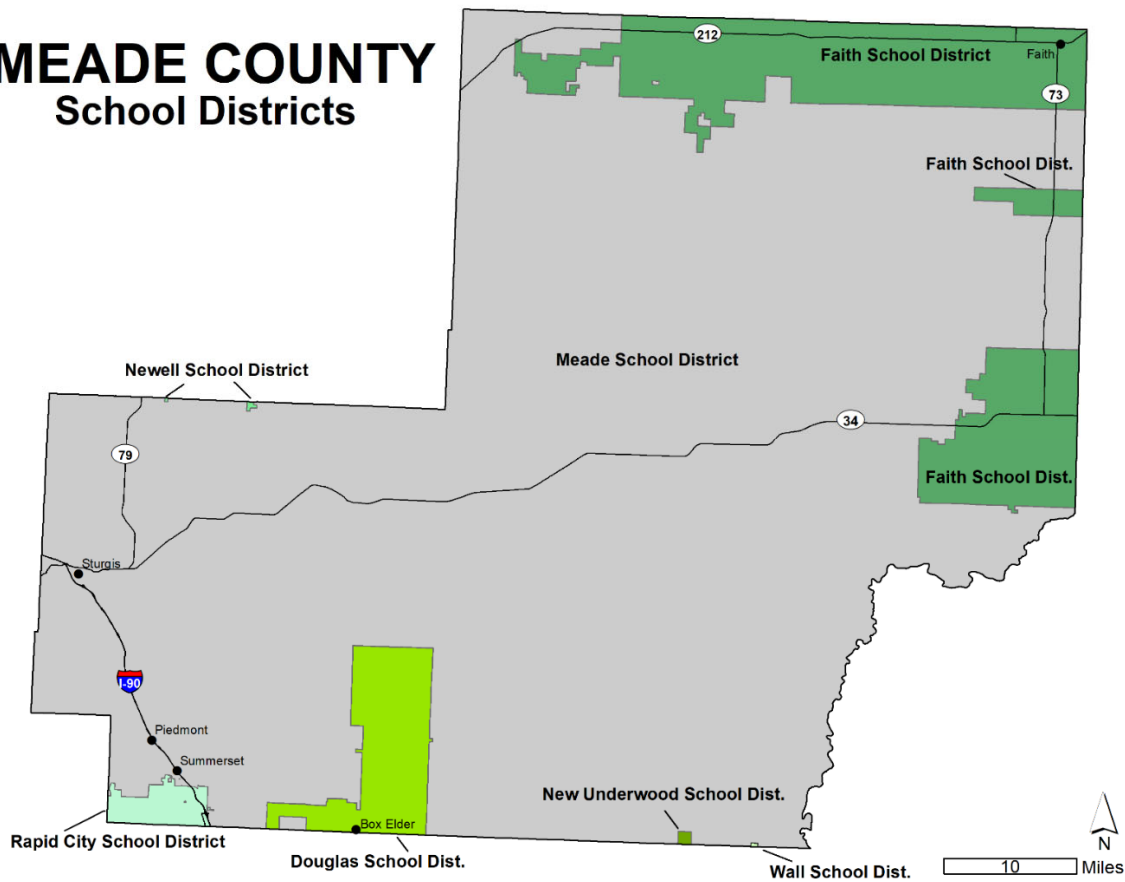
### BACHELOR'S DEGREE OR HIGHER

Age 25+ (2020)

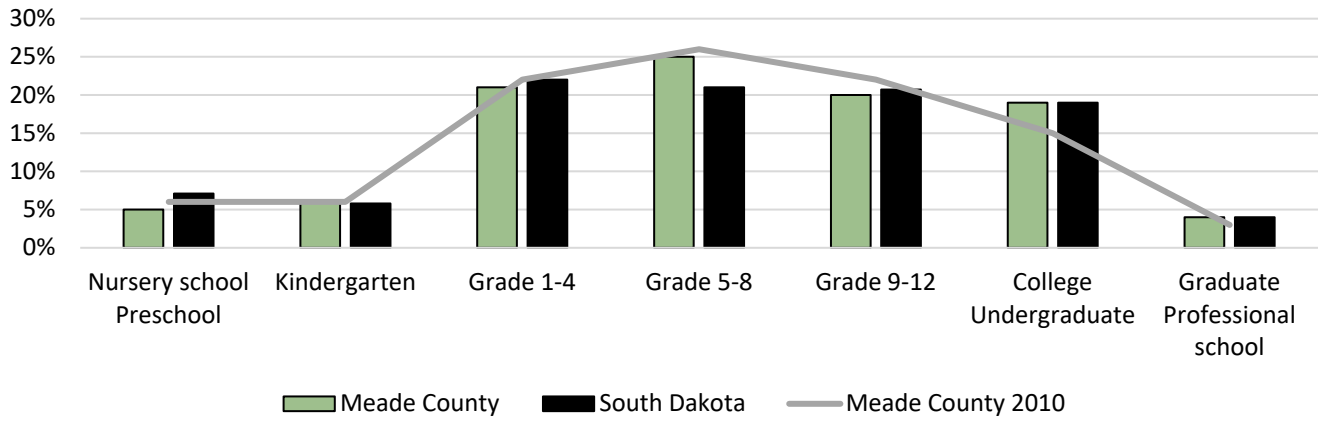
- 26% - Meade County \*21%
- 22% - Butte County \*19%
- 35% - Lawrence County \*32%
- 32% - Pennington County \*28%
- 29% - South Dakota \*25%

\*2010

## MEADE COUNTY School Districts



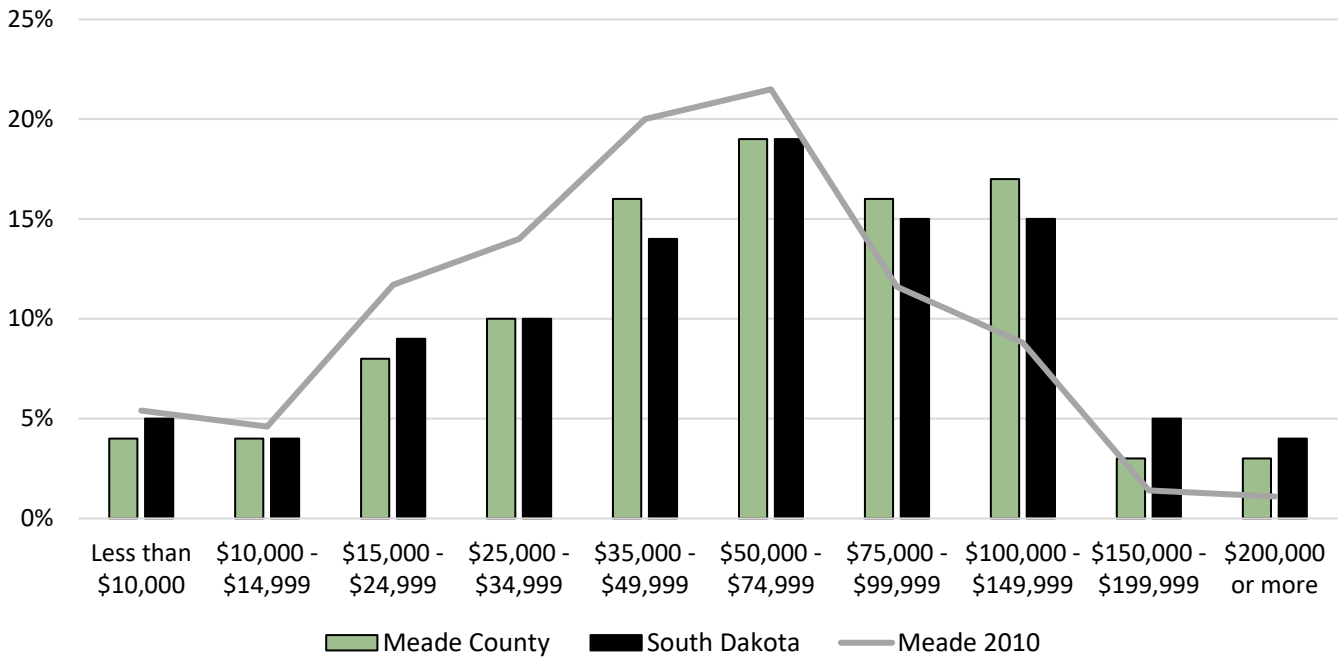
## POPULATION AGE 3 & OVER - ENROLLED IN SCHOOL (2020)



**6,644 – Meade County total population age 3 and over enrolled in school**

## INCOME & COST OF LIVING

### HOUSEHOLD INCOME DISTRIBUTION (2020)



### MEDIAN HOUSEHOLD INCOME (2020)

- \$62,275 - Meade County** \*\$46,180
- \$49,353 - Butte County** \*\$39,041
- \$52,146 - Lawrence County** \*\$42,356
- \$58,278 - Pennington County** \*\$46,849
- \$59,896 - South Dakota** \*\$46,369

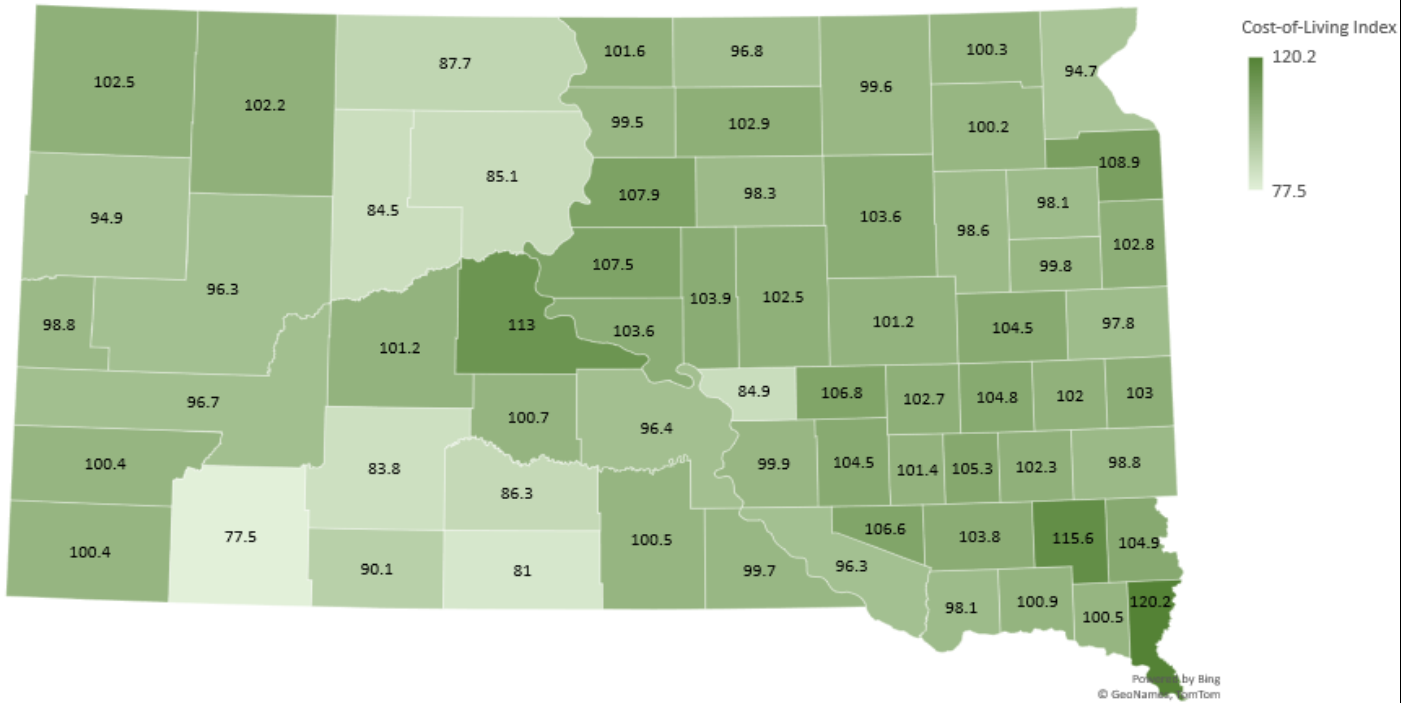
\*2010

### BELOW POVERTY LEVEL (2020)

- 6.3% - Meade County** \*10.1%
- 10.0% - Butte County** \*15.6%
- 12.2% - Lawrence County** \*15.3%
- 14.0% - Pennington County** \*14.0%
- 12.8% - South Dakota** \*13.7%

\*2010

### COST-OF-LIVING INDEX (2021)



The cost-of-living index indicates the relative price level for goods and services in different regions. The base cost-of-living is 100. A lower index than 100 indicates that region has a lower cost-of-living. An index higher than 100 indicates a higher cost-of-living for that region.

### HOUSING & DEVELOPMENT

#### MEDIAN HOME VALUE (2020) (Owner-Occupied)

- \$207,700 - Meade County** \*\$145,800
- \$153,000 - Butte County** \*\$114,300
- \$224,200 - Lawrence County** \*\$155,100
- \$197,200 - Pennington County** \*\$149,700
- \$174,600 - South Dakota** \*\$122,200

\*2010

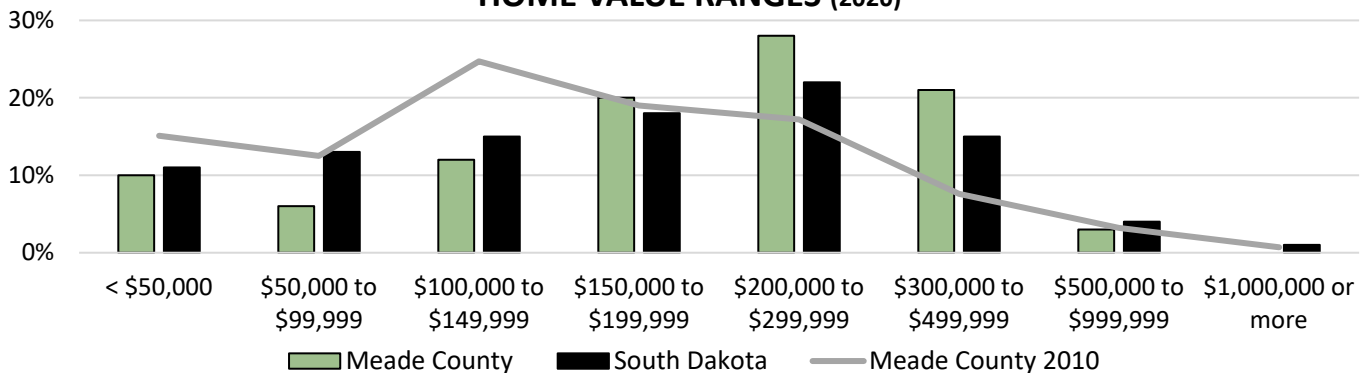
#### HOUSING COST-BURDENED (2020)

*More than 30% of household income is spent on housing costs.*

- 27% - Meade County** \*29%
- 26% - Butte County** \*26%
- 29% - Lawrence County** \*31%
- 27% - Pennington County** \*32%
- 22% - South Dakota** \*25%

\*2010

#### HOME VALUE RANGES (2020)



### MEDIAN GROSS RENT (2020)

**\$952 - Meade County** \*\$612  
**\$772 - Butte County** \*\$467  
**\$785 - Lawrence County** \*\$543  
**\$859 - Pennington County** \*\$671  
**\$761 - South Dakota** \*\$574

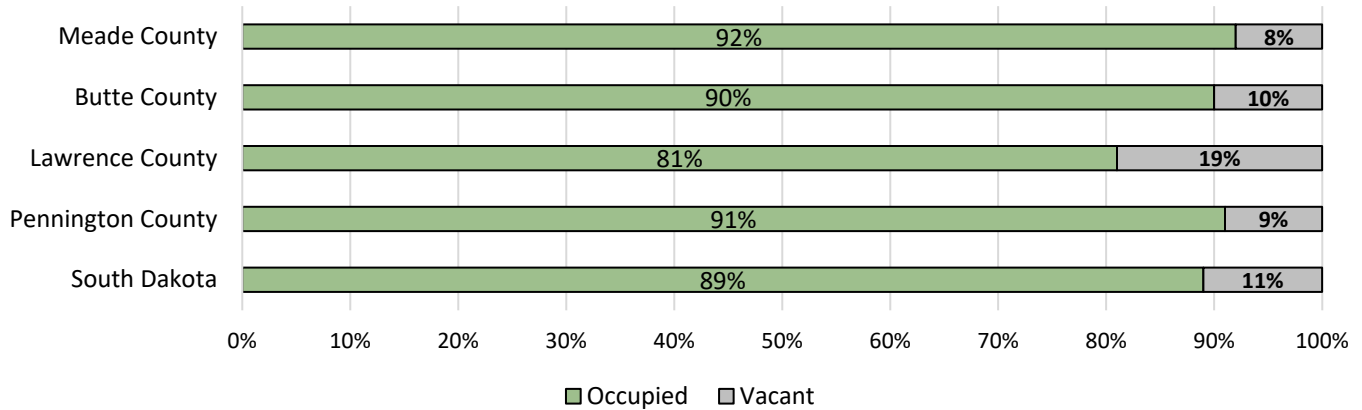
\* 2010

### MEDIAN MONTHLY HOUSING COSTS (2020)

**\$1,003 - Meade County** \*\$780  
**\$797 - Butte County** \*\$605  
**\$820 - Lawrence County** \*\$616  
**\$929 - Pennington County** \*\$836  
**\$827 - South Dakota** \*\$672

\*2010

### HOUSING OCCUPANCY (2020)



### HOUSEHOLDS WITH PEOPLE UNDER 18 YEARS (2020)

**31.4% - Meade County** \*32.3%  
**33.4% - Butte County** \*28.8%  
**21.3% - Lawrence County** \*23.8%  
**26.9% - Pennington County** \*33.6%  
**29.7% - South Dakota** \*31.8%

\*2010

### AVERAGE HOUSEHOLD SIZE (2020)

**2.45 - Meade County** \*2.50  
**2.43 - Butte County** \*2.48  
**2.17 - Lawrence County** \*2.06  
**2.47 - Pennington County** \*2.38  
**2.43 - South Dakota** \*2.43

\*2010

### HOUSEHOLDS WITH PEOPLE AGE 60+ YEARS (2020)

**39.1% - Meade County** \*27.8%  
**46.5% - Butte County** \*34.8%  
**46.7% - Lawrence County** \*35.1%  
**41.8% - Pennington County** \*29.9%  
**39.2% - South Dakota** \*32.2%

\*2010

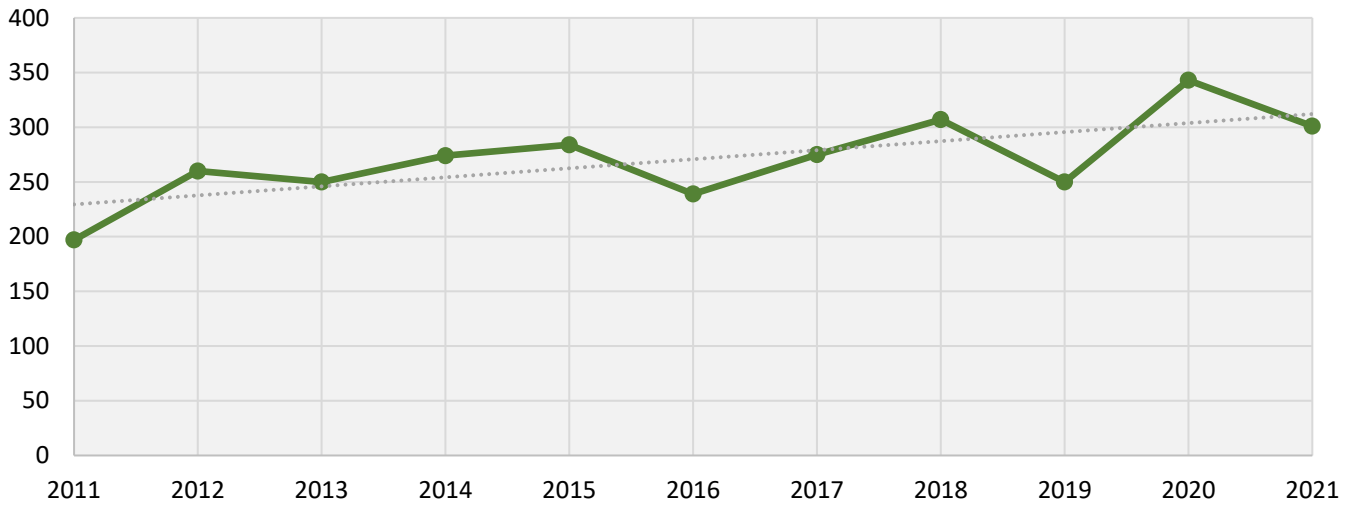
### HOUSEHOLDS WITH PEOPLE AGE 65+ YEARS LIVING ALONE (2020)

**11.2% - Meade County** \*8.5%  
**14.8% - Butte County** \*9.6%  
**14.9% - Lawrence County** \*14.1%  
**12.4% - Pennington County** \*9.5%  
**11.9% - South Dakota** \*11%

\*2010

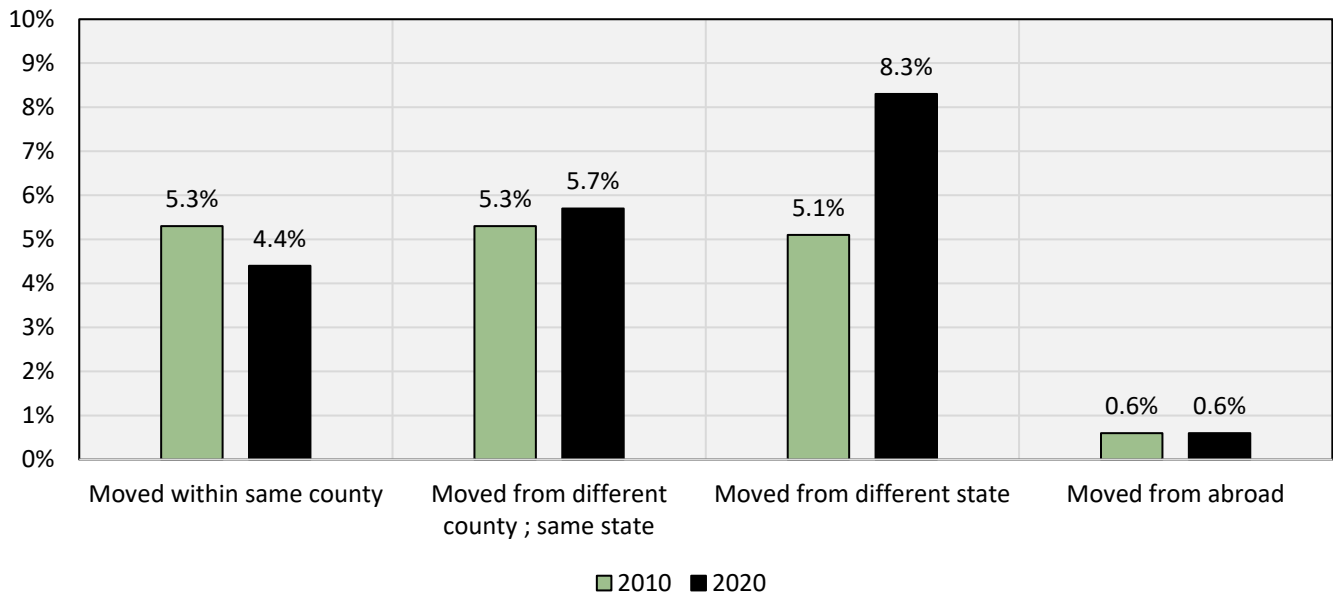


## BUILDING PERMITS (2011-2021)



## GEOGRAPHY

### MEADE COUNTY GEOGRAPHIC MOBILITY (2010-2020)



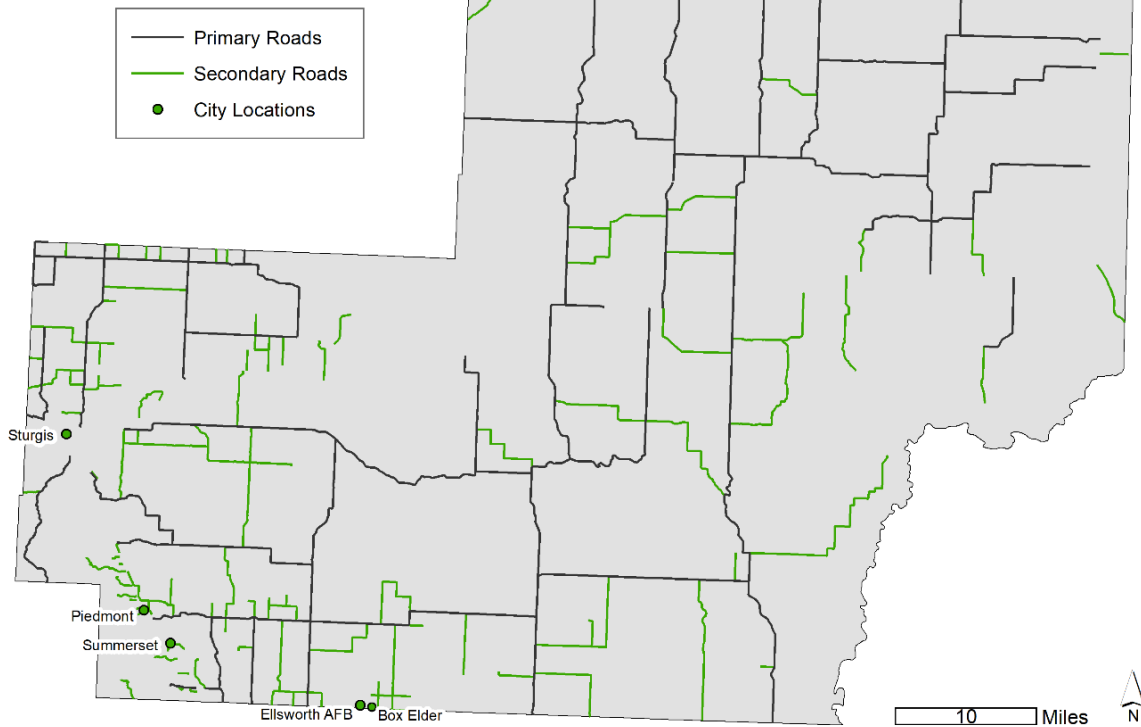
2020	Meade	Butte	Lawrence	Pennington	South Dakota
Moved within same county	4.4%	8.0%	8.4%	8.9%	7.0%
Moved from different county; same state	5.7%	2.0%	4.5%	4.1%	4.4%
Moved from different state	8.3%	2.3%	4.7%	3.4%	3.2%
Moved from abroad	0.6%	0.0%	0.3%	0.6%	0.5%

## 40 ACRES OR MORE

**Roughly 93% of Meade County consists of parcels 40 acres or greater in size.**  
(excluding Federal Lands and State Parks)

# MEADE COUNTY

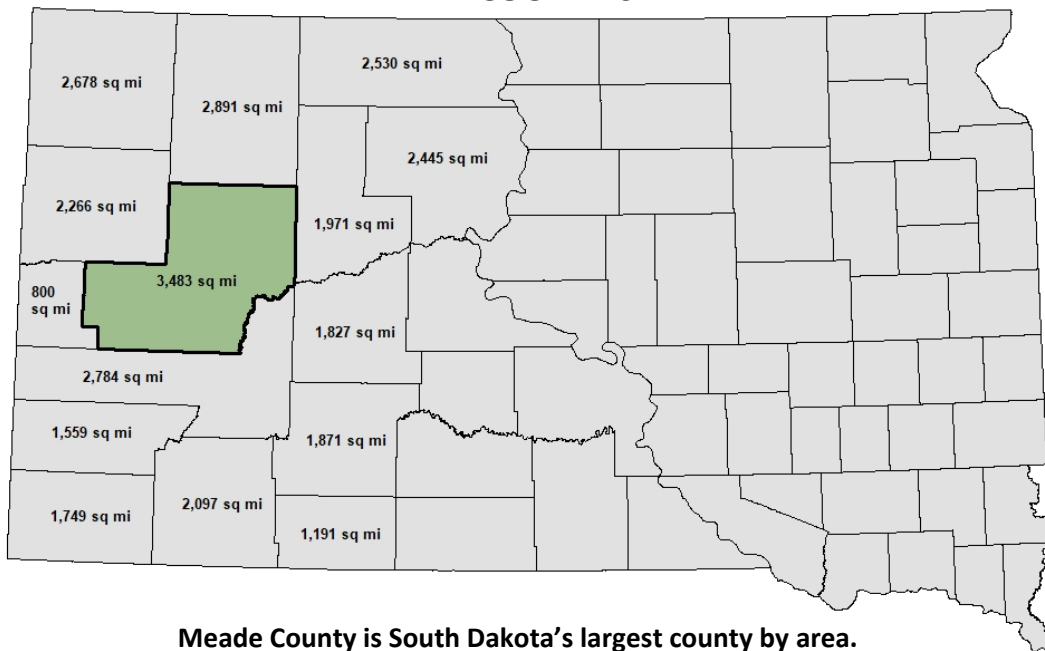
## County Maintained Roads



**1,969 - Miles of road in Meade County**  
**951.29 - Miles of road maintained by Meade County**

***Roughly 48% of roads in the county are maintained by Meade County.***

## MEADE COUNTY SIZE

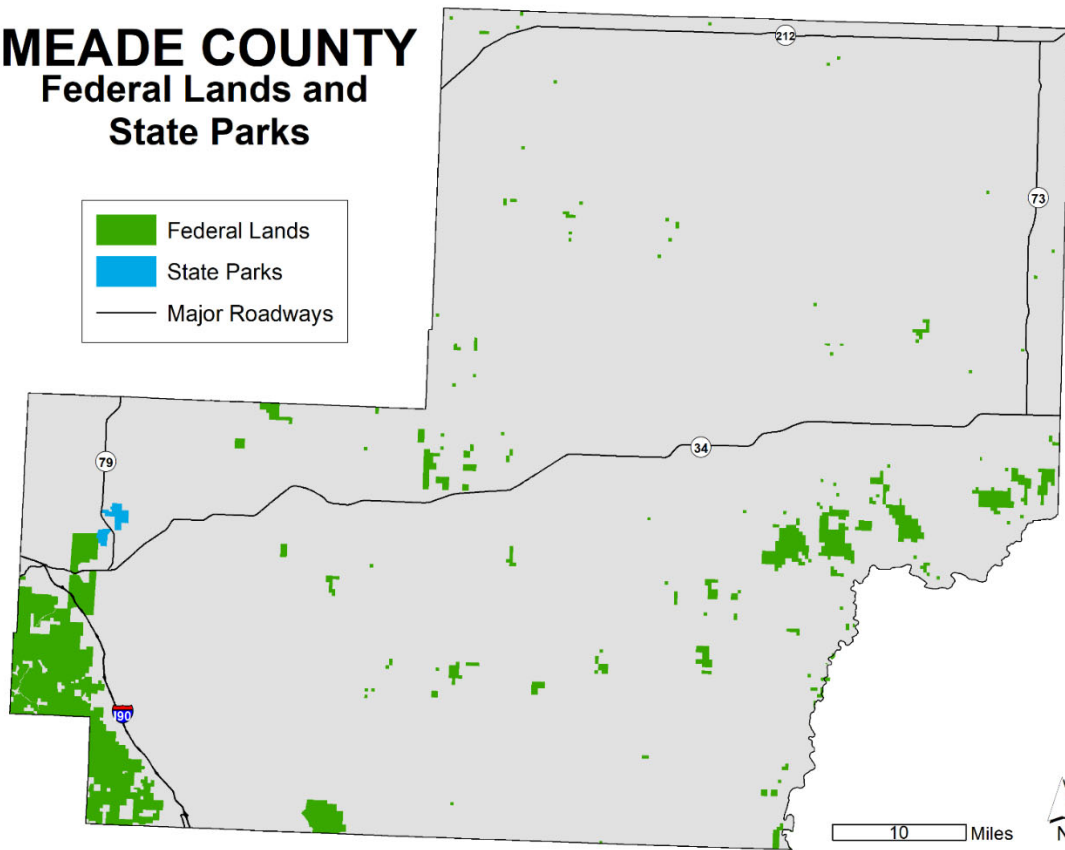


**Meade County is South Dakota's largest county by area.**

**Meade County is larger than Rhode Island and Delaware combined (3,196 sq mi).**

# MEADE COUNTY

## Federal Lands and State Parks



**Federal Lands and State Parks make up roughly 4% of the area of Meade County.**